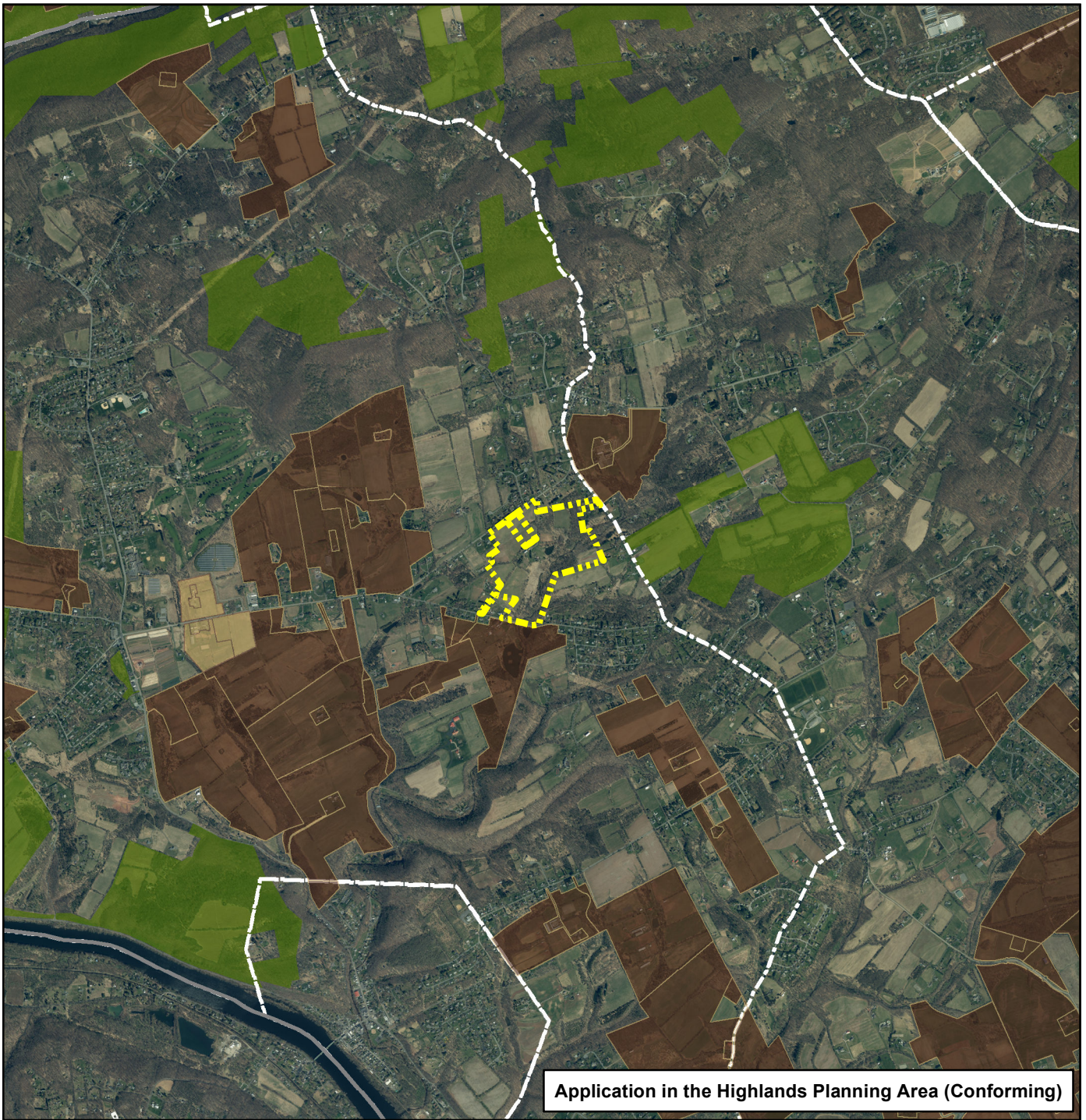


# Preserved Farms and Active Applications Within Two Miles

X:\counties\hunc\projects\Schmied, Wayne R 2mile.mxd



Application in the Highlands Planning Area (Conforming)

## FARMLAND PRESERVATION PROGRAM NJ State Agriculture Development Committee

Schmied, Wayne R.  
Block 11 Lots 2 (111.5 ac) & 2.06 (5.9 ac)  
Gross Total = 117.4 ac  
Holland Twp., Hunterdon County

2,000 1,000 0 2,000 4,000 6,000 Feet



- Property In Question
- Preserved Easements
- Transfer Development Rights (TDR)
- Preserved: Highlands, Pinelands and Municipal
- Active Applications
- County Boundaries
- Municipal Boundaries
- Municipal, County and Non-Profit Preserved Open Space, State Owned Conservation Easements, & State Owned O/S & Recreation Easements

**Sources:**  
NJ Farmland Preservation Program  
NJOT Parcel data  
NJDEP Conservation/Open Space Easement Data  
NJDOT Road Data  
NJ Highlands Council Data  
NJOT/OGIS 2020 Digital Aerial Image

**NOTE:**  
The parcel location and boundaries shown on this map are approximate and should not be construed to be a land survey as defined by the New Jersey Board of Professional Engineers and Land Surveyors

October 11, 2022